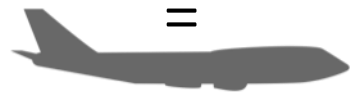
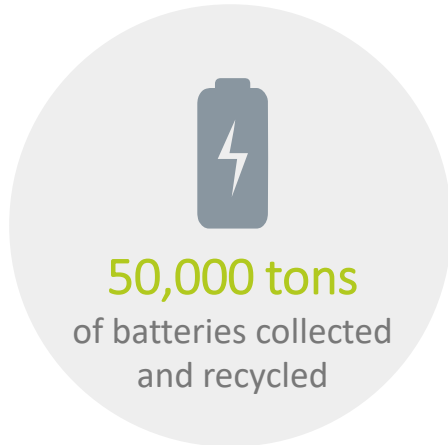


# EU CONSULTATION FORUM – GAMES CONSOLES

15/11/2017

Dora Caria

# OUR ACHIEVEMENTS



111  
Boeing 747 jumbo jets



6,444  
Boeing 747 jumbo jets



15,555  
Boeing 747 jumbo jets

Running 32 compliance schemes over the EU & ME

Direct operations with own permits in 15 countries

Over 24.500 customers



# INTRODUCTION

- ERP has reviewed the list of possible non-energy efficiency requirements to include in the proposal of version 2.5 of Games Consoles *Self-Regulatory Initiative* (SRI)
- ERP has provided its opinion based in the current mostly used recycling methods/technologies within the EU market as well as the potential impact of the requirements implementation on the recycling production lines (benefits vs constrains).
- ERP considers that the non–energy efficiency requirements introduced in the proposal of the new version of the Games Consoles SRI, display a good compromise to drive Games Consoles *end-of-life* (EoL) recycling/recovery improvement

# A BIT OF CONTEXT...

- **EoL Game Consoles are collected and treated under the SDA/SHA operational WEEE stream, which is by definition heterogenous:**
  - Typology
  - Dimension
  - Type and amount of substances classified as hazardous
  - Type and amount of substances, mixtures and components that have to be removed (as per annex VII of Directive 2012/19/EU)
- **For Games Consoles the minimum selected substances, mixtures, components to be removed (according Annex VII of Directive 2012/19/EU):**
  - Printed circuit boards
  - Plastics containing brominated flame retardants
  - External electric cables
  - Batteries
  - Mercury containing components
- **Mechanical processes** are, currently, the most used recycling technology to treat SDA (and consequently games consoles), however there are still some manual disassembling cases

# ECO-DESIGN REQUIREMENTS

Brief analysis on the requirements relating to the Games Consoles eco-design parameters:

New Requirements Proposed in SRI	
<b>Ensure removability of key components (Annex VII, WEEE)</b>	Important to ensure substances, mixtures and components listed in annex VII of the Directive 2012/19/EU are removable as this may be linked to hazardous waste and WEEE treatment requirements.
Requirements to be considered during the next SRI review	
<b>Limit use of polymers and coatings</b>	<p>May improve quality of plastic output fraction from either the manual or automated recycling, but recognise that producers may use different polymers and coatings for important marketability and technical reasons</p> <p>The signatories will consider the feasibility of introducing the requirement that plastic parts &gt;100g to be removable and made of polymers that are compatible for recycling.</p>

Other eco-design requirements were considered, but were not deemed sufficient for efficient recycling:

- Use of RFID / fluorescent tracers on products



# INFORMATION REQUIREMENTS

Brief analysis on the requirements relating to the supply of information to the recycling/recovery facilities:

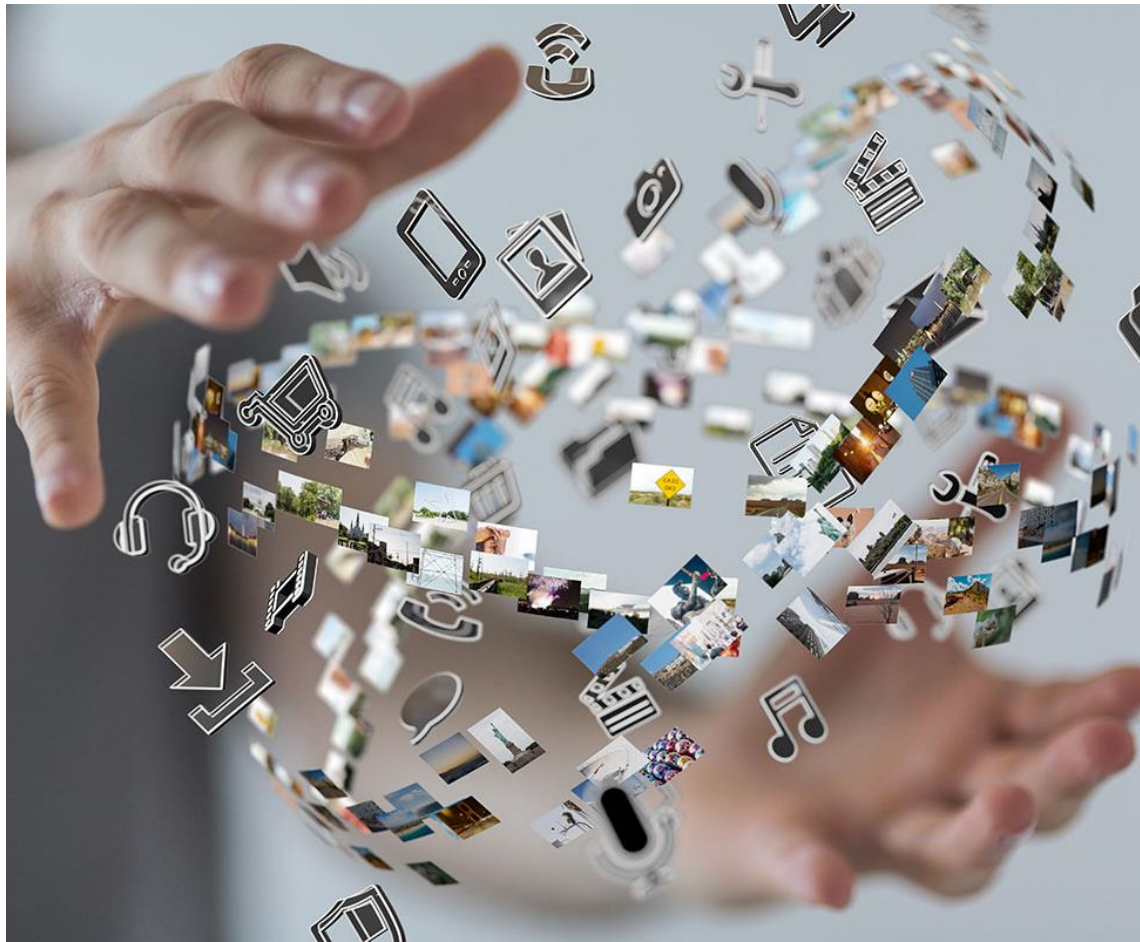
Requirements already included in version 1 of the SRI	
Plastics Markings for parts >25g	For other smaller plastics parts finding and deciphering the marking is relatively time-consuming and a systematic inspection would considerably slow down recycling processes.
New Requirements Proposed in SRI and to be implemented From 1st of January 2020 onwards	
Information of Brominated Flame Retardants (BFR) presence in Plastic Casing	BFR/BFR free plastics marking is useful only for pure manual disassembly recycling methods, which is not the case for Games Consoles. Providing information to the recyclers about the presence of BFR plastics could be interesting, upon request. It is not relevant, at this stage, to know the type or concentration of BFRs in plastic.
Information of Mercury presence in LCDs	Providing information to the recyclers about the presence of mercury screen back-light could be interesting, upon request. Mercury-free screens do not require separate treatment and are more valuable for recycling.

Other information requirements were considered, but were not deemed sufficient for efficient recycling:

- Use of recyclability indexes / bill of materials
- Provision of dismantling diagrams
- Location and amount of critical metals (to be consider as recycling technology improves in future)







## LANDBELL GROUP

Your service provider for all environmental  
and recycling topics

**Dora Caria**

**Head of Audit, Quality and Engineering Solutions**

LANDBELL AG  
für Rückhol-Systeme  
Rheinstraße 4 L

55116 Mainz

Germany

Phone: +351 91 226 18 77

E-Mail: [dora.caria@erp-recycling.org](mailto:dora.caria@erp-recycling.org)

Web: [www.landbell-group.com](http://www.landbell-group.com)



ENGINEERING CIRCULAR ECONOMY



European  
Recycling  
Platform

THANK YOU!

